



Tulplast®



ACCESSORIES FOR FENCING PANELS

Reliability and durability
in good style



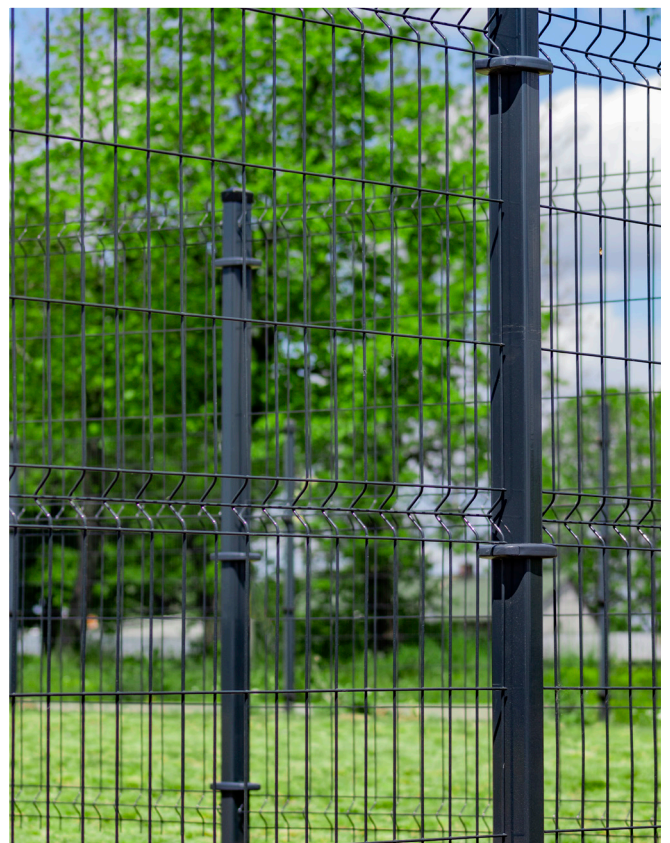
Plastic
intermediate
clamp

Plastic bracket
for foundation



Harmonious form

Timeless elegance and perfect fit of elements.



Universal, minimalist style

Identical fence surface without protruding elements which disturb the fencing rhythm.

Engineering masterwork

Quick and smooth assembly.



Representatively and coherently

Perfect RAL colour fit to the fence post.



Plastic intermediate clamp



Immediate assembly with a screw.

Strict clamp adherence to the post.

Perfectly matched caps protecting mounting screws.



Properties

- very strong connection of panels 3D ø 3, 4, 5 and 2D type 6/5/6 with the fence post 40 x 60 mm,
- metal clamp equivalent,
- the same distances are maintained between fence posts during assembly,
- exceptional fencing stability,
- the press of panels against posts eliminates noise, caused e.g. by vibrations generated by wind or ball impact,
- simple and quick assembly,
- exceptional resistance to weather conditions (UV radiation, frost resistance).



Material: polyamide (PA).

Colour:

RAL 9005



RAL 7016



RAL 7040



RAL 6005



RAL 8028



Intended purpose

- modern residential housing,
- single-family houses,
- industrial plants,
- office complexes,
- public utilities (hospitals, schools),
- other industrial and business spaces.



Plastic intermediate clamp

Plastic intermediate clamp TYPE: OPT40x60/ZAS/W/COLOUR

ART.NO: 3580

Caps (2 pcs.)

Metal screws for plastic
(2 pcs.)
6,1 x 30 TX25

Clamp



Plastic intermediate clamp (without caps) TYPE: OPT40x60/W/COLOUR

ART.NO: 3581

Metal screws for plastic
(2 pcs.)
6,1x30 TX25

Clamp



Plastic intermediate clamp



Metal hot-dip galvanized intermediate clamp



Design advantages:

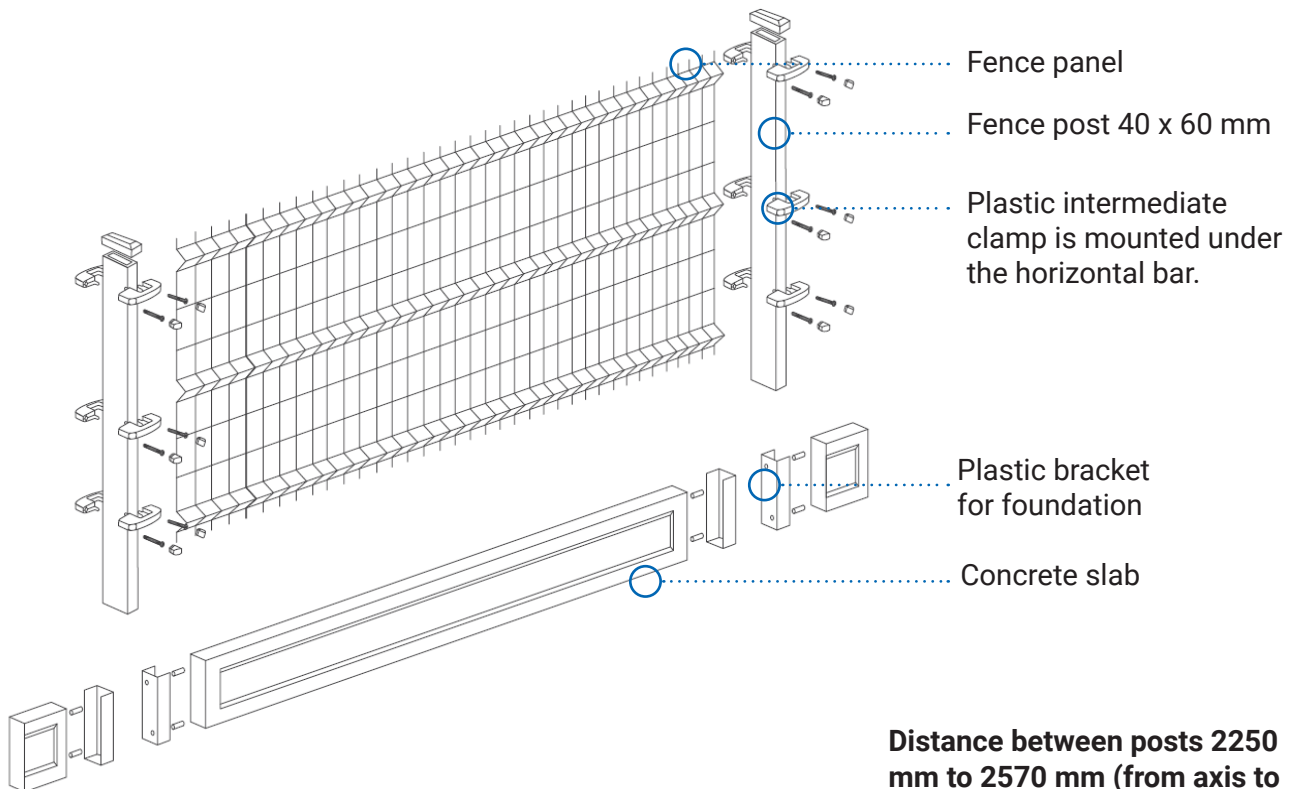
- **Metal clamp equivalent.** The same distances are maintained between fence posts as during assembly of metal intermediate clamp.
- **Immediate assembly.** Openings inside the clamp allow its quick fixing by means of screws intended for plastics. This kind of fixing does not require using problematic spacers, so-called booklets. The fixing is easy to be modified also after final assembly.
- **No corrosion centre.** The plastic intermediate clamp is without doubt a product with better technical values. Compared to the metal clamp the screws are set in the mounting holes and additionally protected by caps. The advantage of such a solution is that there is no corrosion.
- **Safety.** Rounded structure protects against accidental cut.
- **Timeless and original design.** The appearance of the clamp is consistent with the fence post and plastic bracket for concrete slab.
- **Problem-free delivery.** No scratches during transport and low product weight allow the reduction of forwarding costs.

Material advantages:

Exceptional resistance to weather conditions and mechanical damage.

- The plastic clamp is made of high quality technical plastic - polyamid (PA), containing UV stabiliser. This kind of plastic guarantees lasting protection against adverse weather conditions. This material features high resistance to impacts in low and high temperatures. The plastic has also a high ability to absorb vibrations, good dimensional stability and high resistance to environmental corrosion and penetration of chemicals.

Assembly diagram



Distance between posts 2250 mm to 2570 mm (from axis to post axis).

INSTALLATION INSTRUCTIONS FOR 3D FENCE Ø4, Ø5 AND 2D 6/5/6 USING INTERMEDIATE PLASTIC CLAMPS



Plastic intermediate clamps should be placed under horizontal bar of fencing panel, and the lower clamp should be placed above horizontal bar. Thus the panel is set stable on clamps. For heights above 1.5m it is recommended to mount 3 sets of clamps.

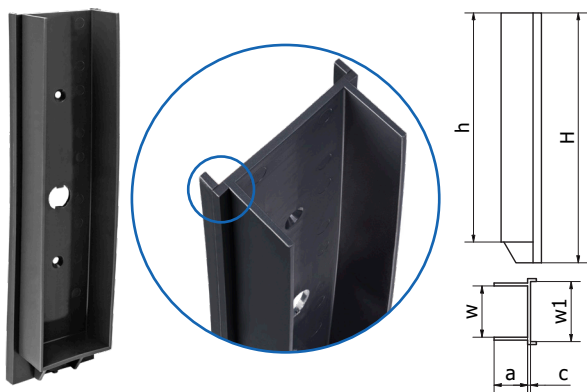
Mount fencing panel between intermediate posts using plastic intermediate clamp and screws 6,1x30 TX25.

Put front part of the clamp Ø6 mm and rear part of the clamp Ø3 mm so they embrace the whole post together with the panel. Using drill driver with bit TX25 carefully screw one side and then the other. When both parts are matched properly, screw to achieve contact until resistance is felt.

Note: electric drill driver should be fitted with torque clutch so a torque of 8-12 Nm can be achieved.

Plastic bracket for foundation

Standard version: **MPT**



Durability and resistance to corrosion compared to metal equivalent.

Innovative design allows the quick levelling of the bracket in relation to the fence post.

Stable concrete slab maintenance.

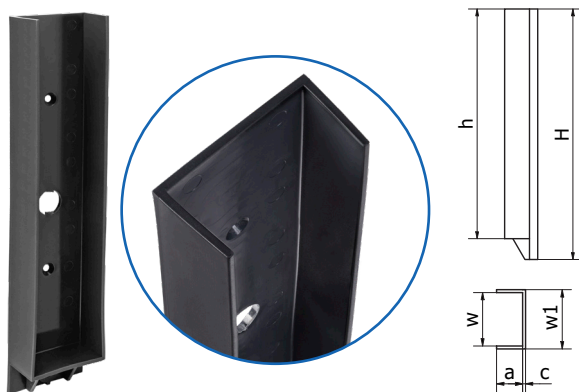
Designed for concrete foundations with various widths.

ART.NO	TYPE	h [mm]	W [mm]	w1 [mm]	a [mm]	c [mm]	H [mm]
3576	MPT42x200x35	195	44	61	34	3	215
4006	MPT50x200x30	195	52	61	31	3	215
3493	MPT50x250x30	245	52	61	31	3	265
4007	MPT57x200x33	195	59	61	33	3	215
4008	MPT57x300x33	295	59	61	33	3	315

Properties

- resistance to mechanical damage,
- high resistance to weather conditions (UV radiation, frost resistance),
- simple and quick assembly,
- consistent appearance of foundation fixing with plastic clamp,
- economic values,
- no scratches during transport and assembly,
- no corrosion centres.

Corner version: **MPT/N**



ART.NO	TYPE	h [mm]	W [mm]	w1 [mm]	a [mm]	c [mm]	H [mm]
3577	MPT/N42x200x35	195	44	49	34	3	215
4009	MPT/N50x200x30	195	52	58,5	31	3	215
3569	MPT/N50x250x30	245	52	58,5	31	3	265
4010	MPT/N57x200x33	195	59	67	33	3	215
4011	MPT/N 57x300x33	295	59	67	33	3	315



Material: polyethylene.

Color RAL 9005



RAL 7016



RAL 7040



RAL 6005



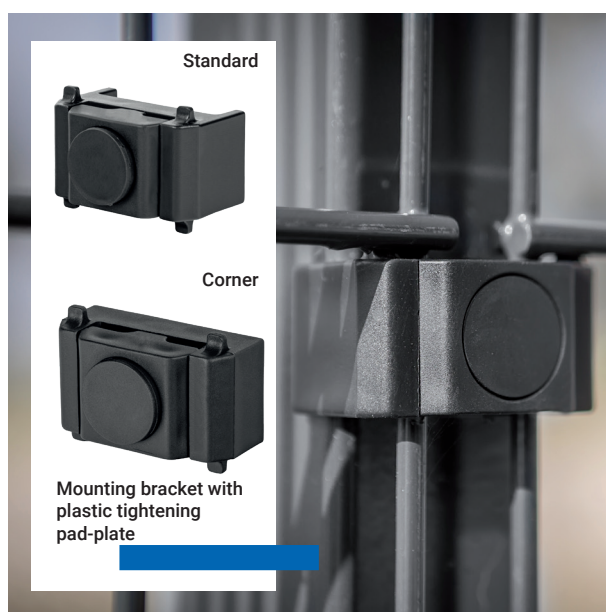
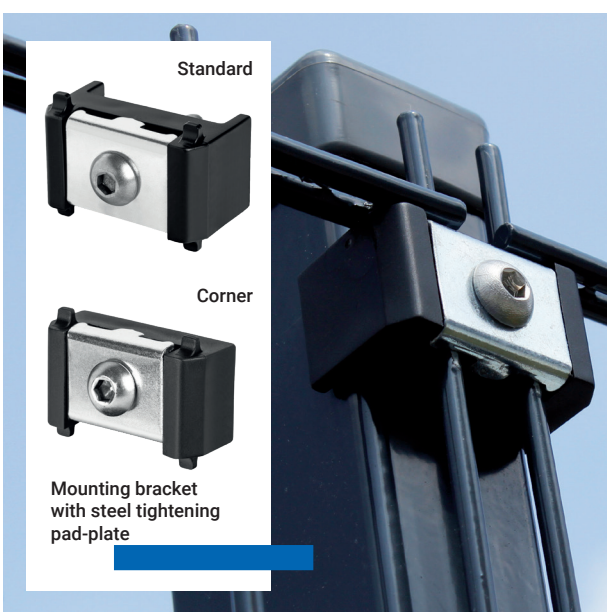
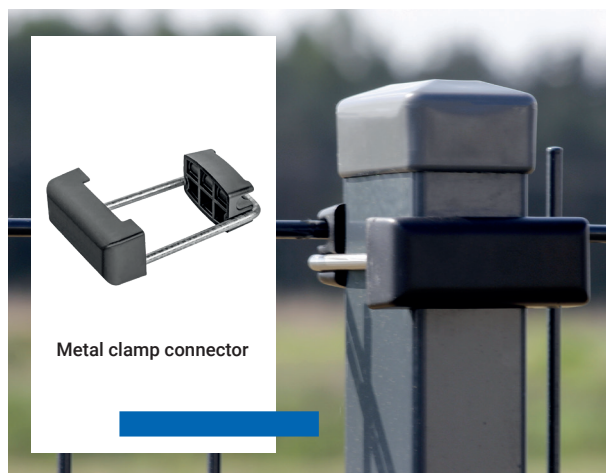
RAL 8028



CONCRETE COLOR



Other accessories for installation of fence panels included in the offer



SCAN AND SEE

Other accessories for installation of fence panels.



Tulplast Socha Sp. K.
ul. Wiosenna 27, 62-021 Paczkowo
phone +48 698 107 418,
order@tulplast.pl
www.tulplast.pl